



Manufacturer
of touchless car
washes

**YOUR BUSINESS
STARTS HERE**

TABLE OF CONTENTS

About Eurowash	04
Why Eurowash	22
Your business goal	24
The course of the investment process	26
How does it work?	32
Types of advertising wrappers	36
Description of washing programmes	40
Technology description	42
App for remote car wash management	44
System innovations	50
Silver Design	54
Carwash chemicals	72
Payment methods	76
Financing	78
Our projects	80



EUROWASH DEALER - SLOVAKIA

We have been a dealer of touchless car washes ever since we started our cooperation with Eurowash ten years ago. During those ten years, we have constructed 12 new car washes and modernized 3 existing ones.

The company is growing dynamically. We offer our customers new solutions and products, as well as technical and business support. We treat our customers as our partners and continue to support them even after the commissioning of the car wash.

Kamior s.r.o.
Tomáš Oravec



EUROWASH PARTNER - HUNGARY

We have been a partner of Eurowash since 2015. We operate 8 car washes across Hungary. The choice of the car wash manufacturer was not easy, but Eurowash brought us success and high profits. The company has continued to support us even after the commissioning of the facilities. We maintain close partnership relations so as to offer our customers the best solutions adapted to their needs. We are the first to learn about turbofoam, mobile payments, as well as other new products and solutions that allow us to retrofit the existing installations!

Thanks to our partnership with Eurowash our business is secure and we maintain a strong position on the market.

Wash System KFT
Kardos Attila



MODERNISATION BY EUROWASH - GERMANY

Our car wash is located in Stuttgart. At some point, despite the optimal location, we noticed decreasing turnover. Then we learned about the Polish company Eurowash and decided to modernize the entire facility. The decision was not an easy one. Naturally, we did have some concerns, as the company was based more than 1,300 km away from us. For this reason, we visited Eurowash head office to see the technology and production process. We made up our minds the very same day.

Now we can enjoy the new technology, retrofit installations and replaced advertising banners designed specifically for our car wash.

The number of customers and profits have gone up. Eurowash is a reliable business partner.

SB-Waschpark Münster

Eurowash Sp. z o.o. - we are a Polish manufacturer of modern touchless car washes. Our head office is located in Sobolewo near Białystok. In 2007, the owner of the company – **Sylwester Zatuska** started to work on new technologies for the production of touchless car washes. The company was established eight years later, in April 2015.

Our main goal and mission is to meet and exceed the needs of Investors and to be the best manufacturer of self-service touchless car washes in Europe and all over the world. We have built a strong brand with a competitive advantage on global markets by establishing lasting relationships with our business partners. We guarantee our customers maximum profitability of their investment.

HISTORY OF EUROWASH



EUROWASH

YOUR BUSINESS **STARTS HERE**



TIMELINE

EUROWASH

14

years of experience in the construction of car washes

40

employees

80

approx. number of car washes constructed each year

90

days on average required for the construction of a single car wash

2 200

square metres of production and office space

320 000

PLN per year we spend on research and development

**EUROWASH
TODAY**

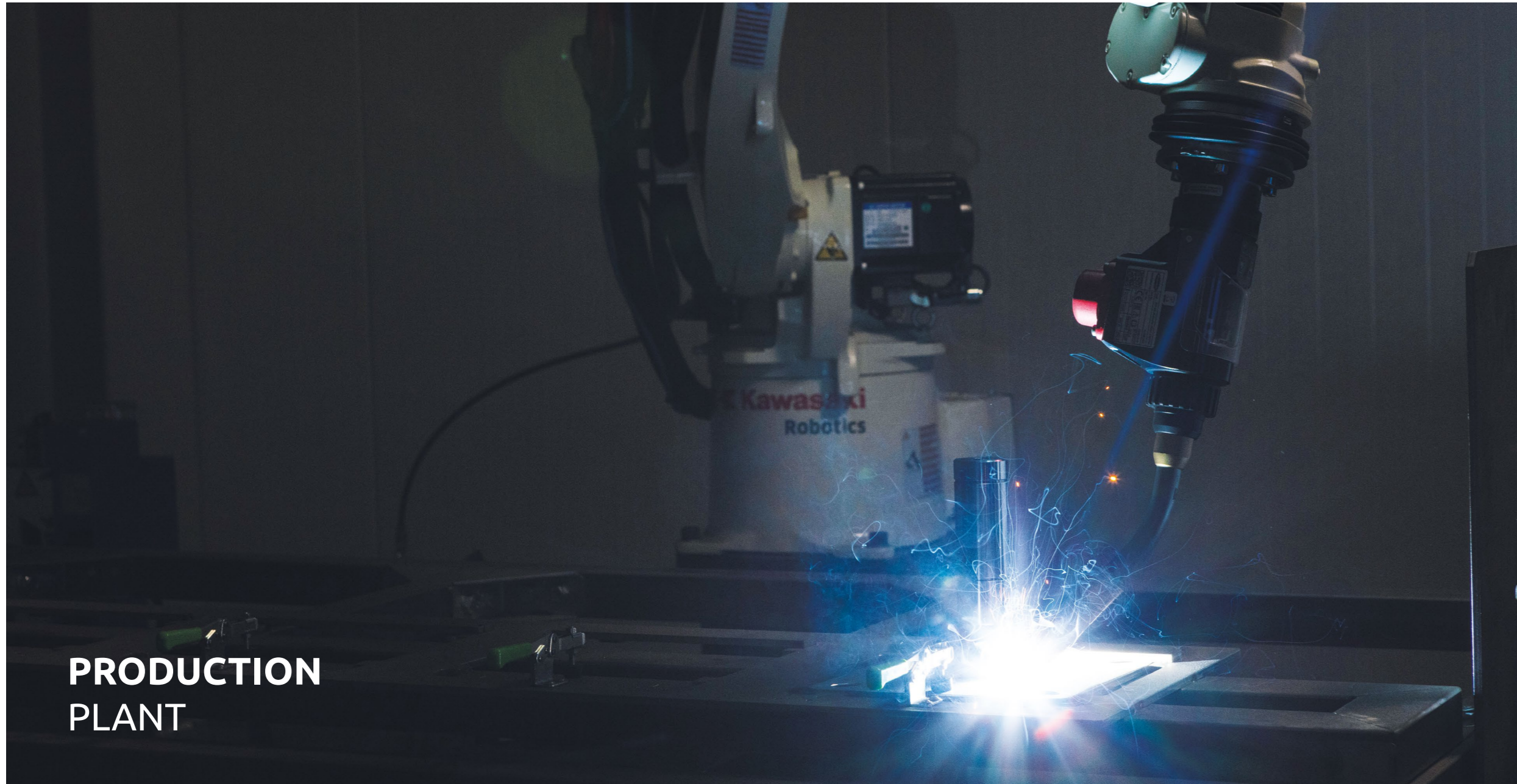


Eurowash Sp z o.o. specializes in the construction of modern, environmentally friendly touchless car washes. Our main business profile is a comprehensive implementation of investments from the design stage through the construction of bays, professional floors, installation of car washing technology, warranty and post-warranty service.

Our priority is providing our customers with high quality technological solutions that offer the best value for money. Eurowash is a leading brand with a well-established position in the market. For this reason, we can guarantee our customers complete confidence of their investment at every stage of implementation and the reliability of the delivered products.

Our aim is to build lasting, long-term relationships with our business partners. The basis of our success and one of our greatest strengths is our highly qualified team, without whom we would not be where we are today.

Eurowash Owner
Sylwester Załuska



PRODUCTION PLANT

1 DESIGN

Once the contract is signed based on the technical specification, our specialists prepare the technical documentation of the car wash so that the production departments know exactly which configuration is required. Once this stage is completed, the prepared documentation is handed over to the production managers.

2 PLANNING

The key aspect for production planning is the date of delivery of the product agreed with the customer, taking into account his or her schedule. On this basis, the various stages of the production process are planned well in advance.

3 METALWORKING

Once the technical documentation has been received, the metalworking production manager orders the production of the components required for the designed car wash as per specification. At this stage, sheet metal, profiles and tubes are cut, welded, bent and turned into the necessary components. Once completed, they are sent to the car wash assembly department.

4 CAR WASH ASSEMBLY

After receiving information on the delivery date of the required components, the assembly manager plans the work in the production and assembly schedule. At this stage, the car wash is produced, ready for assembly at the customer's premises.

5 TESTING

Once the car wash has been assembled, it is subjected to a series of tests on a diagnostic bench. At this stage, the conformity of the manufactured product with the customer's specifications is verified and the operation of the individual functions are checked. This ensures that the car wash is delivered to the customer fully operational and in accordance with his or her expectations.

6 INSTALLATION AND START-UP AT THE CUSTOMER'S PREMISES

Once we have received confirmation from the customer that he or she is ready for the installation of the car wash, our technicians deliver all the necessary components to the location indicated by the customer, carry out assembly, start-up and training of the customer's personnel.

We have a research and development department and a wide range of machinery equipped with professional tools for cutting, welding and assembling individual parts.



SERVICE AND MAINTENANCE



**WARRANTY AND
POST-WARRANTY SERVICE**



AVAILABILITY



REPORTING

Service requests can be made by phone, email or via a form available on our website at www.eurowash.pl/serwis. After receiving relevant information, the service manager contacts the customer in order to set a convenient date for solving the problem or provides assistance remotely.



**TECHNICAL
SUPPORT**



**QUICK
CONTACT**

Since we have service technicians based in various regions of Poland who are supported by our head office, we are able to provide our customers with the highest quality of service.

The project of a new business model related to the internationalisation of our business has entered the implementation stage. The aim is to increase our presence on western markets and establish relationships with new customers and dealer partners.

Our company's development plans for the coming years include participation in industry-specific trade fairs and presentation of Eurowash and our products on the global market.

One of the key factors to ensure the success of any investment is choosing the right business partner.

***BY CHOOSING EUROWASH, YOU GET
THE BEST CHANCE OF SUCCESS!***

EUROWASH TOMORROW





WHY EUROWASH?

1

We offer a comprehensive implementation of car wash construction projects along with support in preparing the design and obtaining the necessary permits.

2

We have a wide range of spare parts for touchless car washes in stock.

3

Most of the elements of our car washes are produced in-house, which allows us to have control over the quality and deadlines.

4

We invest more than 100 thousand PLN a year in the training of our staff and, thus, in our future, to ensure the stability of our business for years to come.

5

We have years of experience in this type of projects and ensure the confidence of our customers' investments at every stage.

6

We treat our customers as our business partners and often attract new customers through recommendations from the existing ones.

7

Thanks to our dedicated customer service, we provide comprehensive after-sales and service support.

8

Our products come with a warranty.



At EUROWASH, we care about establishing a partnership relationship with the client. Remember that your satisfaction is our success

YOUR BUSINESS GOAL

The investment process that we offer is the result of years of experience. Our representatives support our customers at every stage of it, so that, step by step, you can achieve your business goal with us. Thanks to the support of a dedicated account manager, you will find operating your touchless car wash business much easier.

Our priority is establishing a partnership relationship with our customers.

Your satisfaction is our success.



INVESTMENT PROCESS



REQUIRED DOCUMENTATION

In order to construct a touchless car wash, what is required is a suitable location. The car wash can be built on a property owned by the investor or a leased one. In the latter case, it is crucial to ensure that appropriate provisions are included in the lease agreement, which will allow the investor to run the business effectively. It is important to remember about administrative requirements - the property must be classified for commercial or construction-commercial use.

PRIOR TO THE COMMENCEMENT OF THE CONSTRUCTION WORKS, IT IS NECESSARY TO OBTAIN THE FOLLOWING:

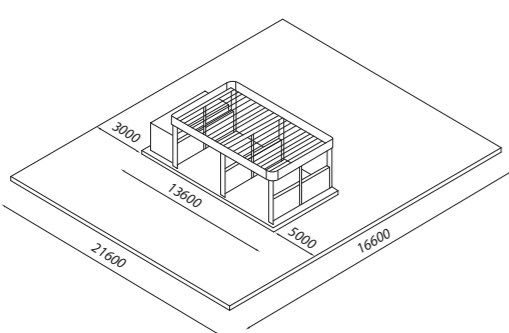
- architectural and construction design, (available for purchase at Eurowash, design for adaptation)
- spatial development plan or building conditions issued
- building permit for a touchless car wash
- in some areas it is necessary to prepare additional documentation and obtain additional permits (e.g. preparation of a water and legal survey or an environmental impact report)
- permits to connect the appropriate utilities necessary for the proper operation of the car wash

Depending on the administrative requirements and the complexity of the project, the time needed to obtain the administrative permits may range from several to several dozen weeks. The works are commenced after the building permit becomes final.

II WASH BAYS

Technical conditions

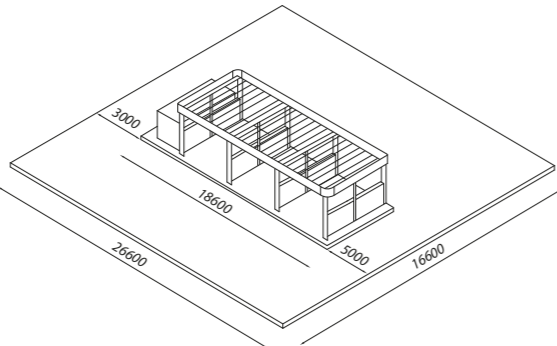
Mains connection	380 V - 50 Hz - 32 A
Total power consumption	12 kW - 16 kW
Boiler power (liquid, powder)	25 kW - 45 kW
Water consumption	1,8 m3/h
Water pressure at the outlet	3 - 5 Bar
Pressure at the outlet of the gun	30 - 130 Bar
Gas consumption	2,5 m3/h - 5,0 m3/h
Oil consumption	1,7 l/h - 3,4 l/h



III WASH BAYS

Technical conditions

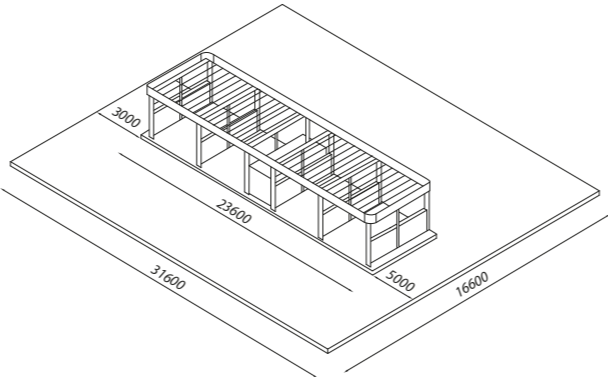
Mains connection	380 V – 50 Hz – 40 A
Total power consumption	16kW - 22kW
Boiler power (liquid, powder)	25 kW – 55 kW
Water consumption	2,6m3/h
Water pressure at the outlet	3 - 5 Bar
Pressure at the outlet of the gun	30 - 130 Bar
Gas consumption	2,5m3/h - 6,0 m3/h
Oil consumption	3,0l/h - 5,2l/h



IV WASH BAYS

Technical conditions

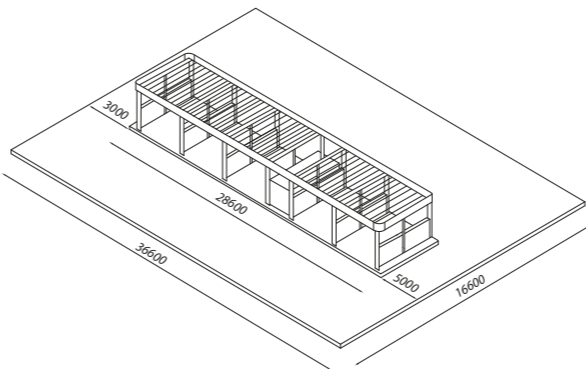
Mains connection	380 V – 50 Hz – 63 A
Total power consumption	21kW - 28kW
Boiler power (liquid, powder)	35 kW – 70 kW
Water consumption	3,7m3/h
Water pressure at the outlet	3 - 5 Bar
Pressure at the outlet of the gun	30 - 130 Bar
Gas consumption	4,0m3/h - 7,0 m3/h
Oil consumption	4,0l/h - 7,0l/h



V WASH BAYS

Technical conditions

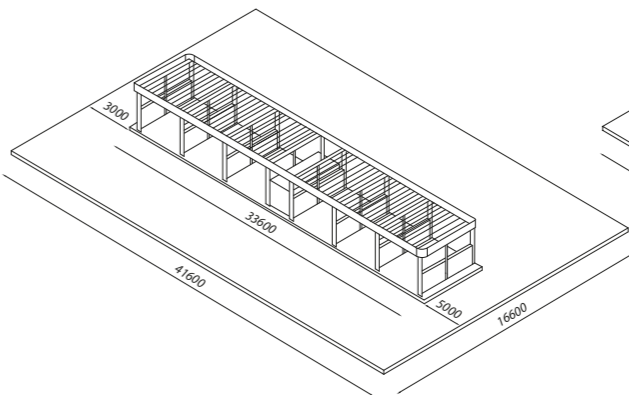
Mains connection	380 V - 50 Hz - 73 A
Total power consumption	24kW - 32kW
Boiler power (liquid, powder)	45 kW - 98 kW
Water consumption	4,4m3/h
Water pressure at the outlet	3 - 5 Bar
Pressure at the outlet of the gun	30 - 130 Bar
Gas consumption	4,5m3/h - 10,0 m3/h
Oil consumption	5,1l/h - 8,2l/h



VI WASH BAYS

Technical conditions

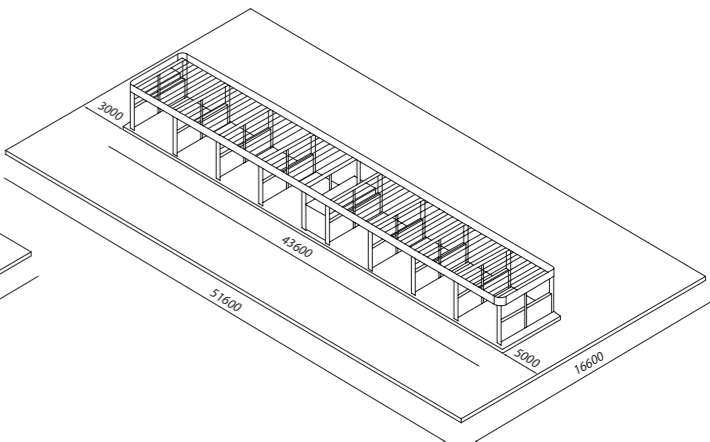
Mains connection	380 V – 50 Hz – 73 A
Total power consumption	28kW - 38kW
Boiler power (liquid, powder)	60 kW – 120 kW
Water consumption	5,1m3/h
Water pressure at the outlet	3 - 5 Bar
Pressure at the outlet of the gun	30 - 130 Bar
Gas consumption	6,0m3/h - 12,0 m3/h
Oil consumption	6,2l/h - 9,5l/h



VIII WASH BAYS

Technical conditions

Mains connection	380 V – 50 Hz – 73 A
Total power consumption	38kW - 45kW
Boiler power (liquid, powder)	80 kW – 140 kW
Water consumption	6,5m3/h
Water pressure at the outlet	3 - 5 Bar
Pressure at the outlet of the gun	30 - 130 Bar
Gas consumption	8,0m3/h - 15,0 m3/h
Oil consumption	8,4l/h - 12,5l/h



*All dimensions in the drawings are given in mm

TECHNICAL REQUIREMENTS

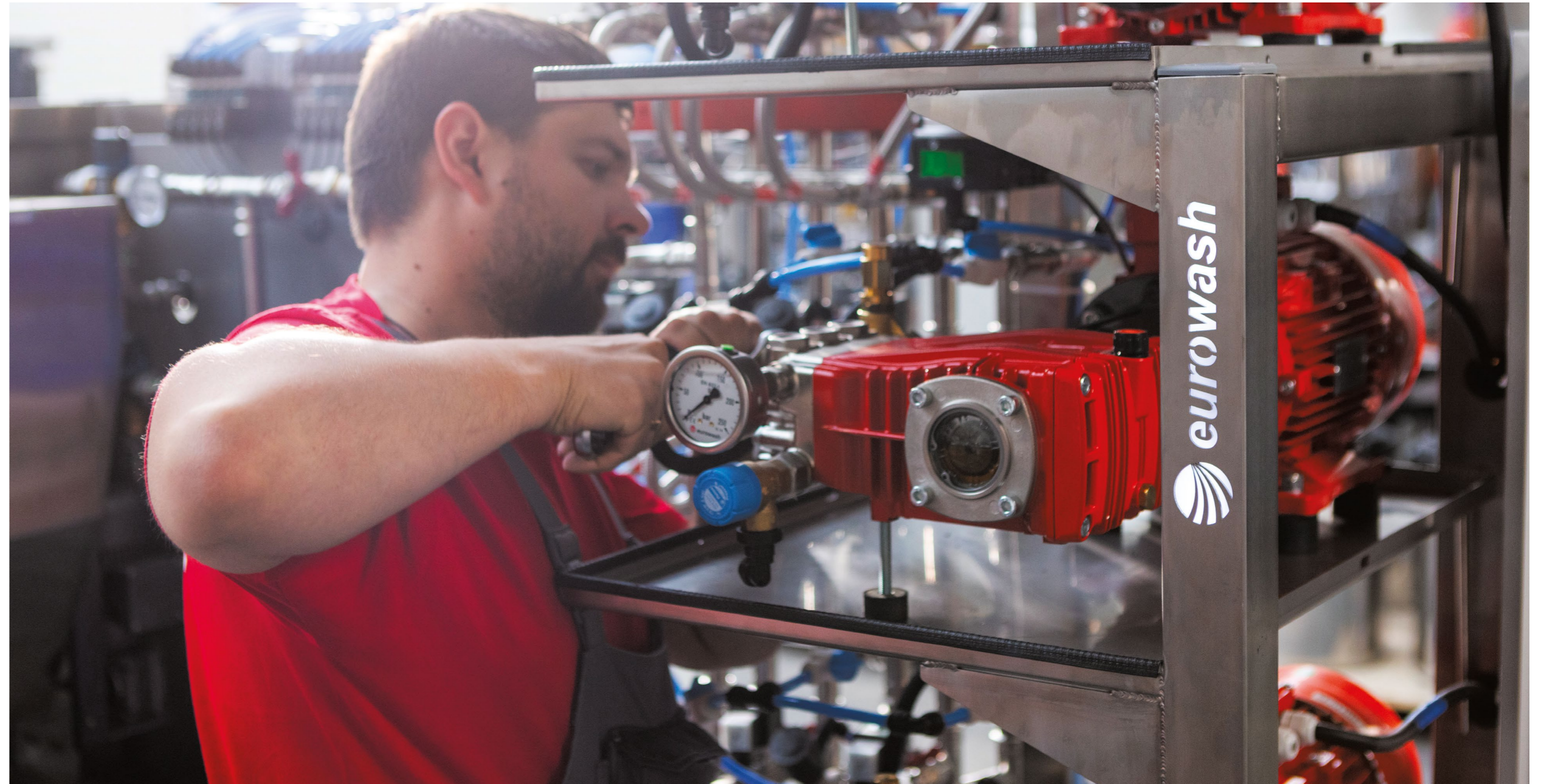
We use stainless steel components in our structures: in micropowder dispensers, panels and structural frames. Dosatron pressure mixers enable dosing of washing chemicals and wax. The washing powder is poured into a special stainless steel container, from which it is dispensed into the hot water tank, creating a homogeneous solution. Liquid chemicals are fed directly to the flowing water through mechanical dispensers.

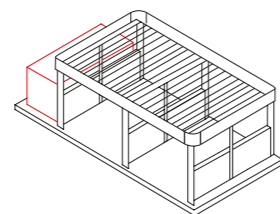
Optionally, it is possible to use electronic dispensers. The water used to polish cars is subjected to the reverse osmosis process, where it is cleaned of all minerals.

There are no streaks or stains on the car body. Eurowash technology is also equipped with an advanced anti-freeze system that works even in the toughest conditions.

THE EUROWASH TECHNOLOGY IS A SYSTEM THAT INCREASES THE EFFECTIVENESS AND EFFICIENCY OF OPERATIONS.

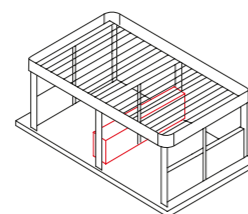
HOW DOES IT WORK?





CONTAINER CAR WASHES

A container car wash is a complete solution intended for installation in a technical room, which can be either a specially built container or a separate area in the building. The washing system is installed on a stainless steel frame on which the control system is placed.



MODULAR CAR WASHES

A modular car wash is a free-standing solution in a stainless steel housing. Inside the housing, there are all elements of the car wash and controls..

TECHNOLOGY





SILVER DESIGN

- Galvanized steel construction
- Roof made of trapezoidal sheet
- LED lighting of washing stations
- Advertising banners with a colourful print (individually designed) or polycarbonate
- Modern banners
- Illuminated dibond letter signage
- A set of gutters and accessories for rainwater run-off system



CLASSIC

- Galvanized steel construction
- Roof made of trapezoidal sheet or polycarbonate
- LED lighting of washing stations
- Advertising banners with colourful print (individually designed)
- Banners made of powder coated or dibond aluminum sheet
- Illuminated letter signage
- A set of gutters and accessories for rainwater run-off system



PRO EUROWASH

- Galvanized steel construction
- Roof made of trapezoidal sheet or polycarbonate
- LED lighting of washing stations
- Advertising banners with colourful print (individually designed)
- Banners made of powder coated or dibond aluminum sheet
- Illuminated letter signage and three-dimensional corners
- Enclosed poles with LED illumination
- A set of gutters and accessories for rainwater run-off system



LIGHT

- Galvanized steel construction
- Roof made of trapezoidal sheet or polycarbonate
- LED lighting of washing stations
- Advertising banners with a colourful print (individually designed)
- Banners made of powder coated or dibond aluminum sheet
- Illuminated letter signage and contour illumination of the advertising banners around the rim
- A set of gutters and accessories for rainwater run-off system



NEW DESIGN

- Galvanized steel construction
- Roof made of trapezoidal sheet or polycarbonate
- LED lighting of washing stations
- Advertising banners with a colourful print (individually designed)
- Modern banners made of dibond
- Illuminated letter signage
- Enclosed poles with plane illumination
- A set of gutters and accessories for rainwater run-off system

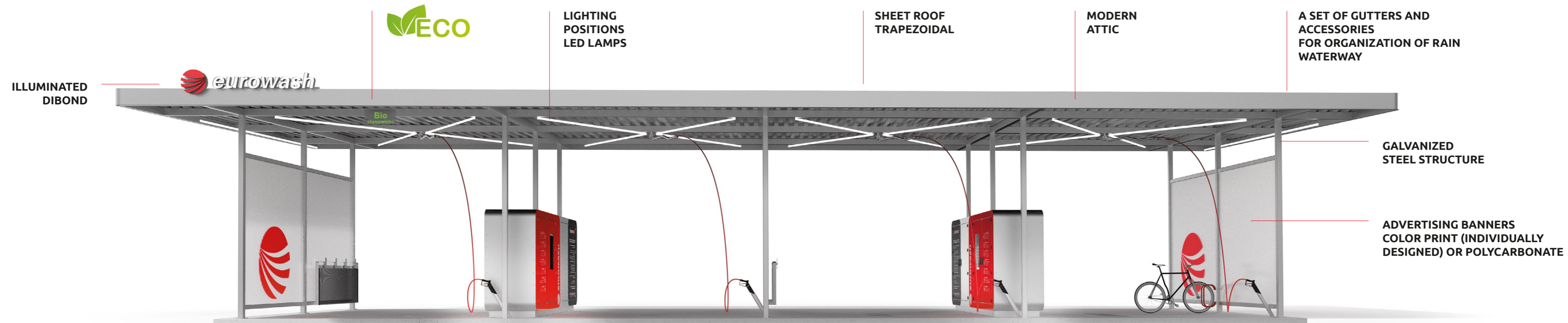
TYPES OF
ADVERTISING
WRAPPERS

CUSTOMISATION OPTIONS

- Possibility of casing poles, in every kind of banner by any amount
- Possibility of visual customisation of the selected banner design
- Preparation of the graphic design of advertising banners

Check how your touchless car wash may look like!





**SILVER
DESIGN**

**ENVIRONMENTALLY FRIENDLY AND AESTHETICALLY PLEASING
MODULAR/CONTAINER CAR WASH
FOR CARS, MOTORBIKES AND BICYCLES WITH DRYING OPTION**

DESCRIPTION OF WASHING PROGRAMMES



MAIN WASH

Washing under high pressure (up to 130 bar) with warm softened water with powder detergent. Effectively removes tough dirt.



RINSING

High pressure clean cold water rinse. The water is softened and free of all solids.



WAXING

Applying the wax with soft warm water with a nanopolymer. Waxing allows to protect the paint against re-soiling.



POLISHING

Cleaning with demineralized water free of undesirable minerals thanks to the reverse osmosis process. This programme ensures that there are no stains left after washing the car without the need to wipe the body.

OPTIONAL



PRE-SOAKING

A new innovative solution. No delay when changing programmes. Washing with high concentration chemicals, safe for plastic and varnished elements, which is designed to help wash heavy dirt, including insects and dust from brake disc.



BRUSH

Helps to remove tough dirt. The overlay made of natural bristles is safe for the paintwork.



TURBO FOAM

The technology of covering the car with a thick foam coating is designed to soften solid dirt and old dust.



CHASSIS WASHING

Thanks to the use of four washing nozzles, the programme allows for easy removal of hard-to-reach chassis dirt.





COIN EXTRACTION (STANDARD MODE OR CLOSED SYSTEM)

Coin extraction is a system that enables the transport and safe storage of coins inserted into the safe.

The technology comes in two variants.

A closed system with a coin separation mechanism for a change machine and an open system equipped with one general secured container, into which all the coins are deposited.



MANAGEMENT SYSTEM

The operation of the installation is controlled by an industrial controller. The most important information concerning the operation of the installation is displayed on the touch panel.

- Three-level access to options
- Pump control
- Floor heating control
- Generating data on current revenues
- Management of prices and discounts
- Introducing changes in the prices of services
- Remote access by phone (internet).



ADVANCED ANTI-FREEZE SYSTEM

At low temperatures, the PLC activates the anti-freeze system, which causes water to circulate through the high pressure hoses. In the absence of electricity, a special solenoid valve opens and the water from the network is fed into the high pressure pipe, preventing it from freezing outside.



INDIVIDUAL HEATING SYSTEM

Combined boilers with double water circulation provide hot water for the process of washing and heating the floor. The boilers can be powered by gas or fuel oil. Their power depends on the selected car wash type.



REVERSE OSMOSIS SYSTEM

Includes an industrial water demineralization plant and tank. When passing through the reverse osmosis system, the water is purified of all minerals. There are no streaks or stains on the car body. The so-called concentrate of such water can be recovered and used for cleaning with chemicals.



HIGH PRESSURE PUMPS

High pressure pumps specially designed for use in a touchless car wash with seals resistant to the most aggressive chemicals. Pressure up to 200 Bar, capacity up to 15L /min.



CHEMICALS FEEDING AND DOSING SYSTEM

- The washing powder and chemicals are poured into a special stainless steel container, from which it is dispensed into the hot water tank, creating a homogeneous solution.
- With liquid chemicals dispensers, the solution is fed directly to the flowing water through mechanical dispensers. The dosage depends on the amount of flowing water. Optionally, it is possible to use electronic dispensers. The dosage is directly proportional to the flowing water.
- Electronic dispensers for liquid chemicals. Dosing is controlled by the car wash computer. The dosage is proportional to the programme used at the washing stations.



WATER SOFTENING SYSTEM

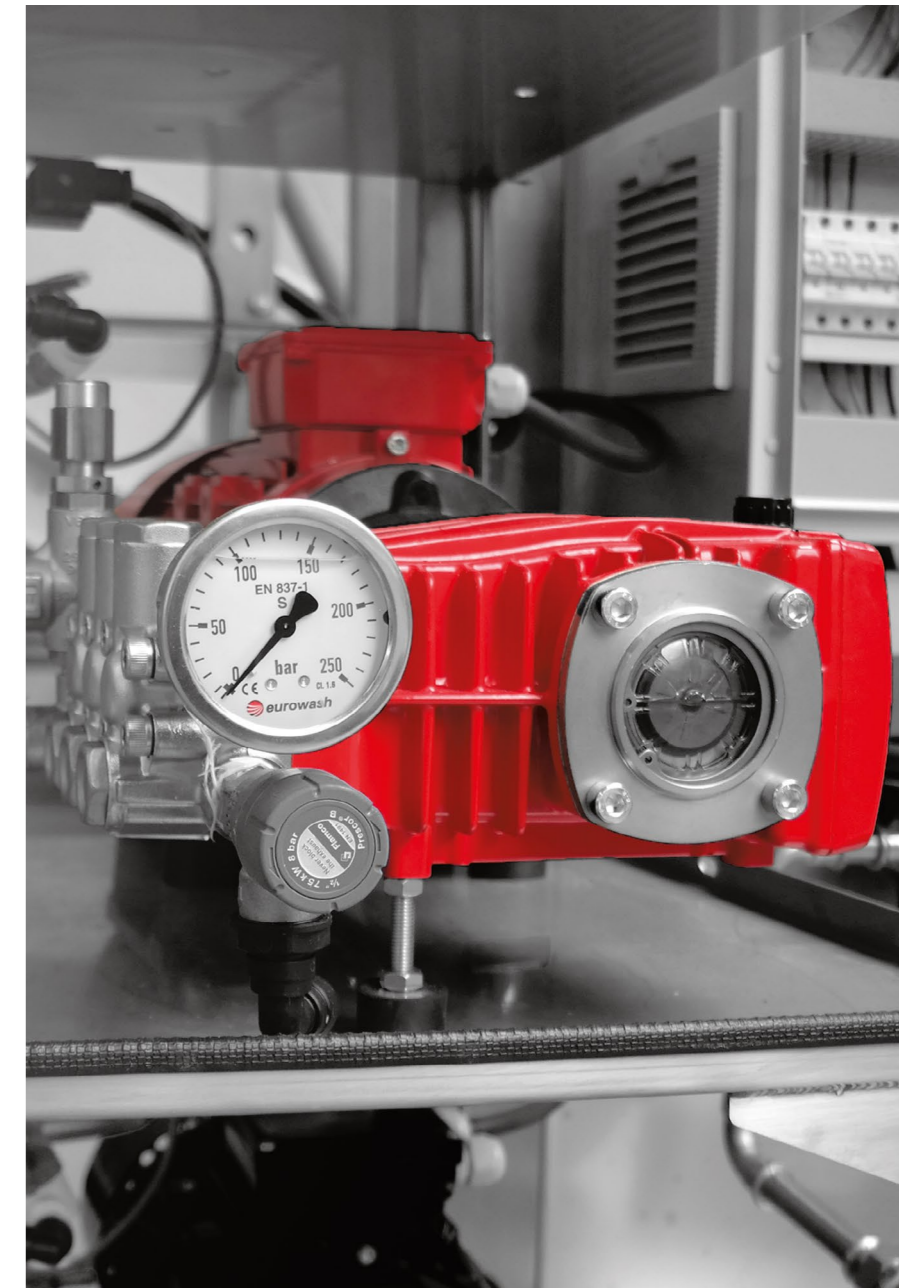
Continuous two-column system. Its task is to remove calcium and magnesium salts from the water, which significantly increases the effectiveness of the chemicals.



WATER FEEDING SYSTEM

High efficiency filter. It is cleaned with an effective method of reverse rinsing without removing the cover. It has a reusable self-cleaning filter cartridge of high-quality.

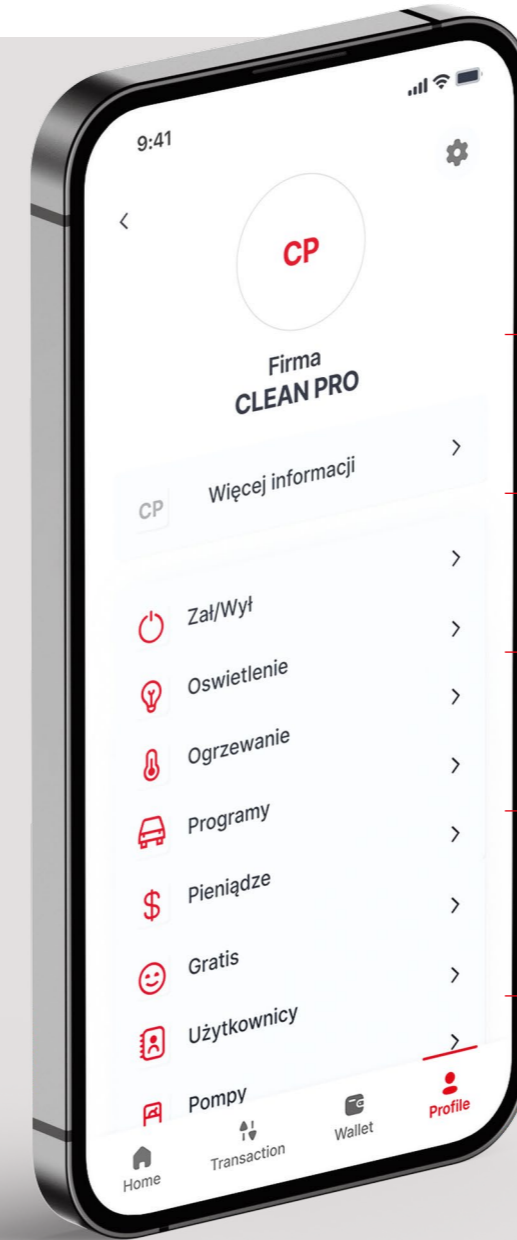
TECHNOLOGY DESCRIPTION



Remote car wash management.

Possibility to manage business via the Internet from any place in the world.

APP FOR REMOTE CAR WASH MANAGEMENT FOR OWNERS



LIMITING THE NUMBER OF PEOPLE
NEEDED TO MANAGE THE CAR WASH

SECURITY OF USE WITH DATA
ENCRYPTION

STATISTICS OF WORK
PARAMETERS AND REVENUES

POSSIBILITY OF CARRYING
OUT PROMOTIONAL CAMPAIGNS
REMOTELY

FULL CONTROL OF WASHING
AND CHEMICALS

WASH YOUR CAR CONVENIENTLY WITH **BubblePay**

MAP OF CAR WASHES IN YOUR AREA

The app allows you to choose the nearest car wash in your area, check the number of occupied stations, washing programmes and available options.

PROMOTIONS

Check promotions at car washes in your area and enjoy additional benefits.

FLEET PROGRAMMES

Join a fleet programme and manage your company car wash expenses.

BUBBLEPAY APP



- available online on the website, on Android and iOS;
- offers a map of Eurowash car washes with photos, number of stations, payment options, additional devices or accessories available for washing in a given car wash. The map has a link redirecting you to the chosen car wash address;
- in case of a long line, the app points to another nearest car wash owned by the investor or another Eurowash car wash;
- the app shows the instructions for washing a car, which can be set to be displayed when the user drives up to a car wash (based on a GPS location);
- the app has a function of making comments about the car wash, which are sent directly to the investor's app;
- the user's app is connected with the investor's app; any promotions and special deals introduced by the investor show up in the user's app;
- the app is available in Polish, English, Slovakian, Lithuanian, Latvian and other languages.



If you are interested in cooperation, let us know and add your car washes to the app. in **BubblePay**

APPLICATION FOR OWNERS



- possibility to choose where the notifications should appear: in the app, by text message and/or by email;
- possibility to receive news and newsletters from Eurowash;
- possibility to introduce car wash subscription services under partnership agreements with car or other vehicle rental companies, transport companies and other companies with fleets of their own vehicles;
- access to customer invoices;
- access to an instructional video, user manual and trouble shooting;
- possibility to set up separate accounts for the car wash manager and determine access levels to the app's functions;
- the app is available in Polish, English, Slovakian, Lithuanian, Latvian and other languages.





SELF-SERVICE TOUCHLESS CAR WASH

WITH AN INNOVATIVE CHASSIS WASHING SYSTEM

As part of the project, we intend to implement an improved product - a touchless car wash with an innovative chassis washing system. Currently, the chassis washing function in touchless car washes is not available due to the fact that the use of an all-year-round solution requires a complicated structure. The solution proposed by EUROWASH will function in all weather conditions.

The function in question will enable:

- the removal of road salt, thus reducing the risk of corrosion of the car body,
- the removal of oil, tar and grease residues, which will be directed to the car wash separator, where they will be disposed of so as not to cause contamination of roads and roadsides,
- the removal of soil particles (mud), which will result in less contamination of paved roads (asphalt, cobblestones, concrete).

The chassis washing function is a new option available in the offer of Eurowash touchless car washes. There is a lot of dirt on the roads, which negatively affects the structural elements of vehicles. Mud, sand or salt accumulate not only on the body, but also on the chassis of the car. It is worth to clean it regularly in order to ensure adequate protection against corrosion and damage.



Thanks to EU support from the Regional Operational Program of the Podlaskie Province for 2014-2020, Eurowash sp. z o.o. implemented the project entitled "A new investment as an opportunity to improve competitiveness and increase employment at Eurowash sp. z o.o." consisting in the expansion of the production and service building, the purchase of machinery and production equipment as well as the purchase and assembly of photovoltaic micro-installations. As a result, a new product was introduced to the company's offer - a touchless car wash with an innovative chassis washing system.



In order to meet our customer's expectations, we have implemented a new product - a car wash with an innovative heating system for washing stations. The smart heating system for washing stands (AIH) offered by Eurowash incorporates sensors installed in the washing station floor and a digital management system to control the heating process.

The innovative elements of the solution include:

- automatic starting of heating of each car wash bay independently
- digital heating temperature control by the car wash owner
- temperature stabilisation at the washing station
- automatic adjustment of the heating temperature depending on the changing ambient temperature
- automatic reduction of the heating temperature of the station at night (as an option)
- automatic temperature change of the glycol supplied to the washing stations depending on the ambient temperature
- system self-diagnosis and data about failures displayed on the car wash control screen.

Additional benefits of using the Automatic Intelligent Heating (AIH) solution by the car wash owner include:

- reduction of heating costs up to 60%
- automation of the heating process
- extension of the service life of components
- protection of concrete slabs against excessive wear due to low temperatures. The use of a unique control system for heating the touchless car wash stations will allow to reduce the consumption of fuels (fuel oil or gas) during the cold seasons. This solution, along with the progressing full digitization and access to the Eurowash car wash services via the Internet, is in line with the assumptions of industry 4.0.



SELF-SERVICE TOUCHLESS CAR WASH

WITH AN INNOVATIVE HEATING SYSTEM FOR WASHING STATIONS



Thanks to EU support from the Regional Operational Program of the Podlaskie Province for 2014-2020, Eurowash sp. z o.o. implemented the project entitled "Implementation of a new technology for the production of touchless car washes with an innovative heating system for washing stations" consisting in the construction of a production and service building with staff rooms, the purchase of innovative machinery and software. As a result, a new product with unique properties was introduced to the market - **a touchless car wash with a smart heating system for washing stations.**





COMPACT SINGLE-STATION CAR WASH

SILVER DESIGN



SINGLE-STATION CAR WASH

The new product is a small and easy-to-use compact car wash from the Silver Design line. An ideal solution for vehicle inspection stations, garages or dealerships.

Do you have a car showroom commission or car rental? Or maybe you run a workshop, service or vehicle inspection station? if so is the perfect solution for your activity.

Compact single car wash is a device that will help you take care of it o cars below yours care. The device has character non-commercial and is designed to support the development of your business.

Both cars for sale as well as those after expensive repairs will be appear in excellent condition.

Self-service vacuum cleaners are the perfect complement to every car wash.

Our offer includes:

- Single-phase vacuum cleaners
- Three-phase vacuum cleaners

All vacuum cleaners have a four-meter cable and a nozzle and are characterized by high suction power.

Thanks to their simple design, their operation is almost intuitive.

Our offer also includes rug beaters.

SINGLE-PHASE VACUUM CLEANERS

ADDITIONAL EQUIPMENT



SINGLE-STATION VACUUM CLEANER

Technical specification:

Power supply	230V/ 50 Hz
Power consumption	2500 Watt
Suction power	max. 220 mbar; max. 5660 l / m
Dimensions	1350 mm
Width	595 mm
Depth	544 mm



DOUBLE-STATION VACUUM CLEANER

Technical specification:

Power supply	230V/ 50 Hz
Power consumption	2500 Watt x2
Suction power	max. 220 mbar; max. 5660 l / m
Dimensions	1350 mm
Width	1037 mm
Depth	544 mm

Features:

- housing: stainless steel,
- payment: coins, possibility to equip the vacuum cleaner with card payment solutions or euro key systems,
- electronic coin slot,
- flexible time setting,
- stainless steel tank,
- textile filter,
- industrial hose,
- plastic nozzle,
- the coin container can be closed separately,
- veneers available on request in all RAL colors,
- connection to the car wash computer.

SILVER DESIGN

THREE-PHASE VACUUM CLEANERS

ADDITIONAL EQUIPMENT



SINGLE-STATION VACUUM CLEANER

Technical specification:

Power supply	400V/ 50 Hz
Power consumption	2600 Watt x 2
Suction power	max. 220 mbar; max. 5660 l / m
Dimensions	1800 mm
Width	1050 mm
Depth	650 mm

Features:

- housing: stainless steel,
- payment: coins, possibility to equip the vacuum cleaner with card payment solutions or euro key systems,
- electronic coin slot,
- flexible time setting,
- stainless steel tank,
- textile filter,
- industrial hose,
- plastic nozzle,
- the coin container can be closed separately,
- veneers available on request in all RAL colours,
- connection to the car wash computer.

SILVER
DESIGN

**Within
your
reach!**

PAPER DISPENSER

ADDITIONAL EQUIPMENT



SILVER DESIGN

PAPER DISPENSER

A machine that allows for a comprehensive car care. It dispenses high-quality paper that dries the plastic parts of the car and prevents dust and pollen from settling on the surface. The material is highly absorbent and can be used to wipe the car windows and bodywork.



CHANGE MACHINES

ADDITIONAL EQUIPMENT



AUTOMATIC CHANGE MACHINES IN DIFFERENT VERSIONS

From the simplest machines exchanging banknote for tokens without spending change, to complex ones that can dispense coins and tokens and recharge EuroKey.

I. BASIC CHANGE MACHINE

- Changes PLN 10, 20, 50 notes to one type of coin (usually PLN 2). Possibility to connect the machine to the car wash computer.

II. ADVANCED CHANGE MACHINE

- Can change money to two or three types of coins.
- Possibility to top up and sell prepaid cards (non-cash transactions).
- Possibility to install a printer, banknote recycler (e.g. PLN 50 into bills PLN 4x10 and the remaining PLN 10 in coins).
- Coin separator for the change machine (coins from the panels go to the coin change machine where they are divided into 3 hoppers).
- All change machines have stainless steel housings.
- Equipped with selection buttons, LCD or graphic display.
- Visualization tailored to the customer's needs.

CENTRAL TOPPING-UP OF THE WASHING STATIONS

- Housing made of stainless steel.
- Two versions: as an attachment to a change machine or as a separate device installed in the container wall.
- The device is equipped with a terminal for cashless payments, a display and buttons for selecting the washing station (from 1-6 washing stations).

ADDITIONAL EQUIPMENT

BICYCLE RACK

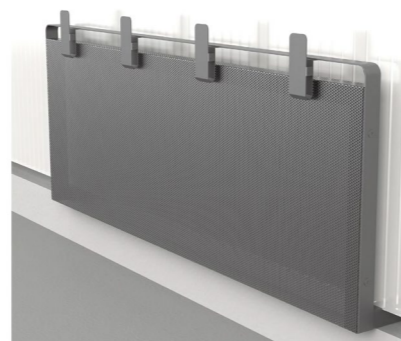
A new high quality product which enables securing a bicycle in place at the washing station. This facilitates the use of our car washes by cyclists.



FRAME FOR WASHING RUGS

Frame made of stainless steel.

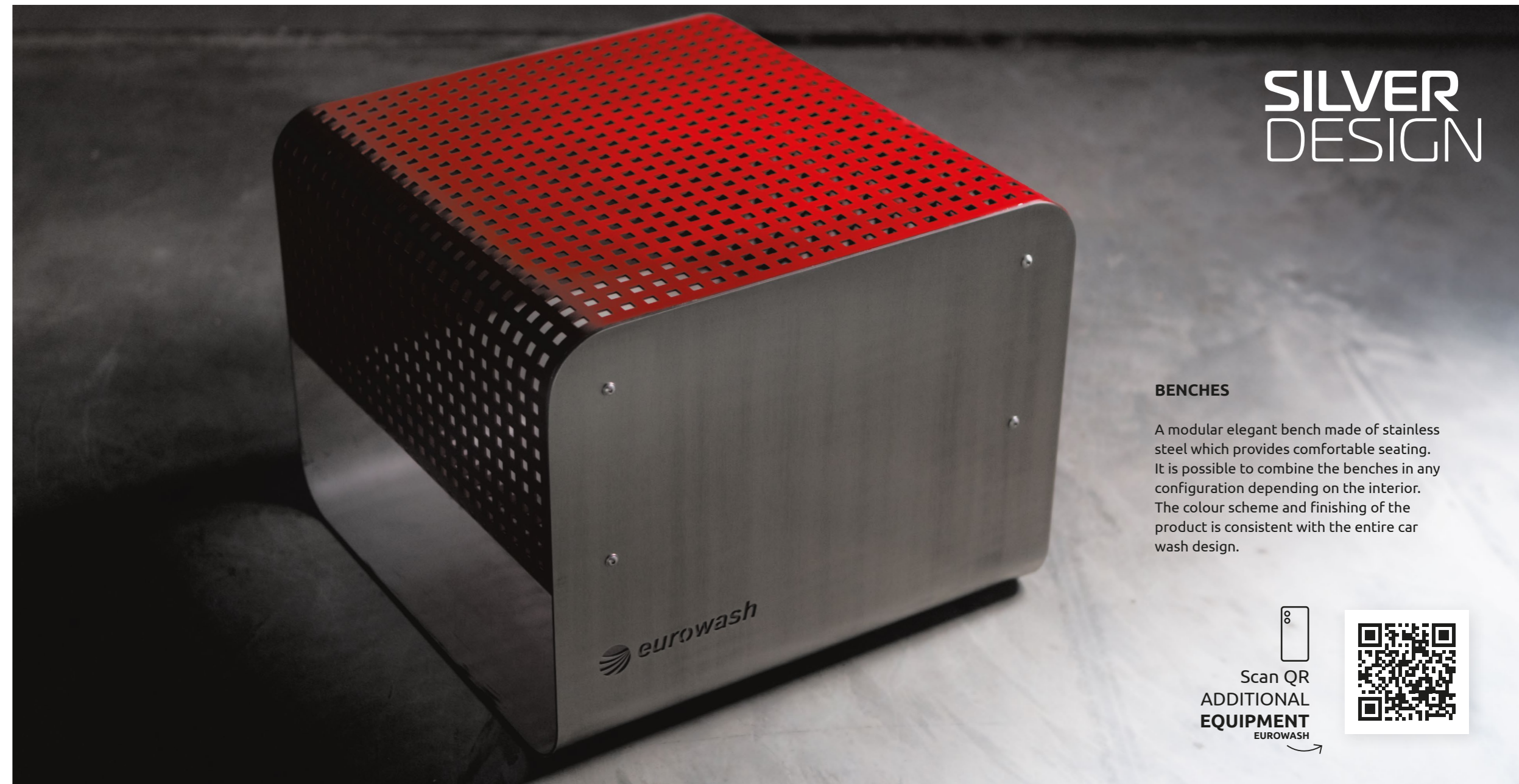
Dimensions:
height: 1100 mm,
width: 2500 mm,
depth 260 mm.



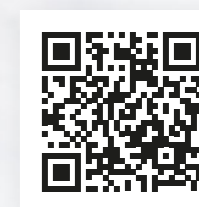
SILVER DESIGN

BENCHES

A modular elegant bench made of stainless steel which provides comfortable seating. It is possible to combine the benches in any configuration depending on the interior. The colour scheme and finishing of the product is consistent with the entire car wash design.

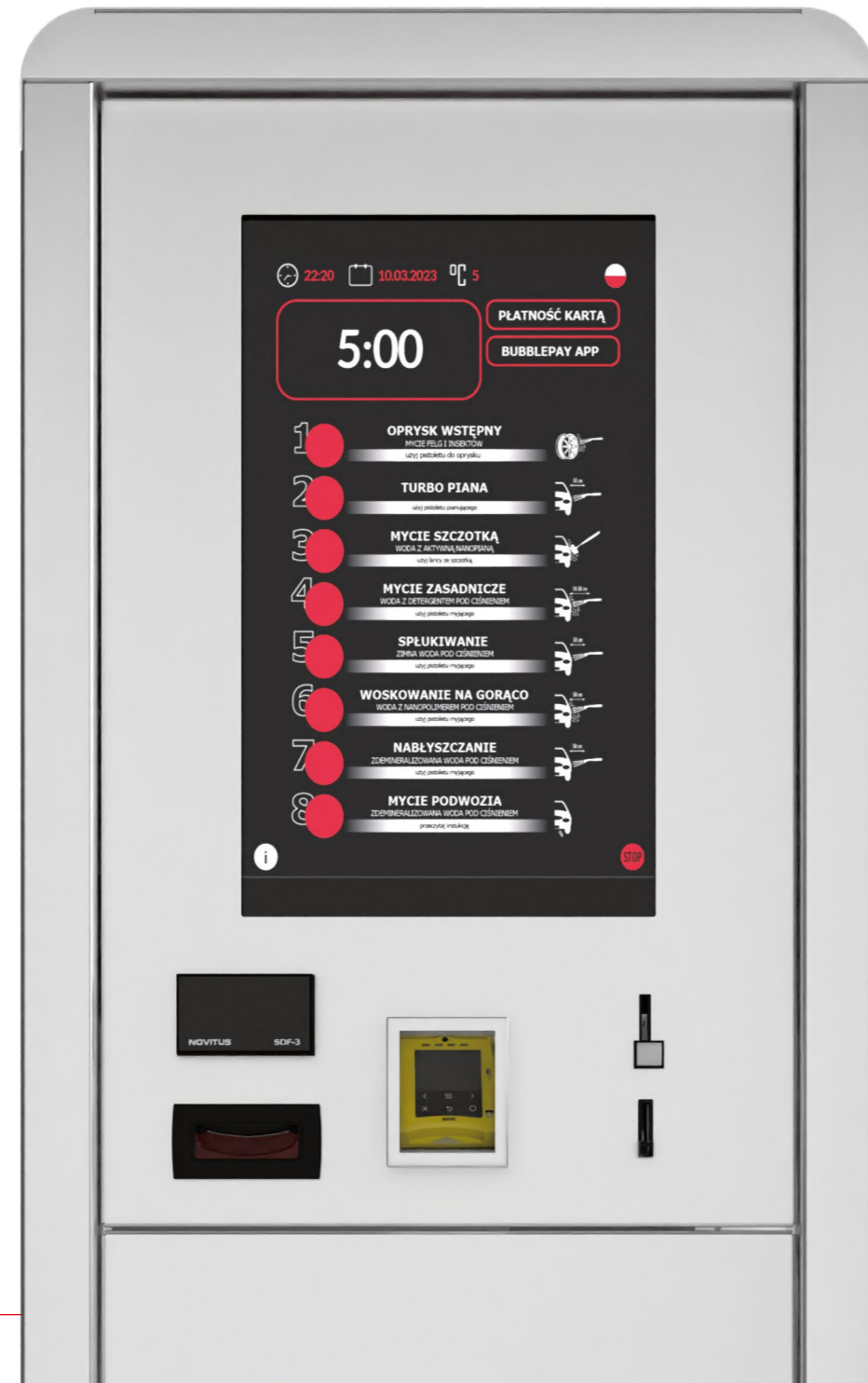


Scan QR
ADDITIONAL
EQUIPMENT
EUROWASH



Each washing station is equipped with a user panels.

EUROWASH PANELS



PANEL

We currently offer 2 types of finish:

- Printing on acrylic glass - UV printing on a durable plastic panel. A solution which guarantees resistance to mechanical damage
- Glass with UV print - a solution which ensures an aesthetic look of the control panels for a long time



SILVER DESIGN

NEW

SMART TOUCH PANEL

An innovative solution, designed with attention to detail. The touch panel, with its wide range of software options, has a customisable interface that can be adjusted according to individual needs.

The touch panel offers a number of advantages, including:

- flexible payments
- simple operation
- modern, smart system

In addition, the panel can be combined with the **Silver Design** product line.

PANEL BONUS

Do you want to encourage your customers to use your services? It's very simple! With this option, when the customer inserts a certain amount of money for a single wash (for example PLN 10), the panel will issue a token that can be used, for example to vacuum clean the car.



SMART DEVICES



EV CHARGERS

Fast charging of electric vehicles at your car wash.

We offer universal EV chargers characterised by innovative design, easy operation and long service life. The double socket allows to charge two cars at the same time.

By investing in EV chargers you can develop and promote your business among new groups of customers. Electric vehicles are becoming increasingly popular, with more and more cars on the market and on the roads.



SILVER DESIGN

ENVIRONMENTALLY FRIENDLY SOLAR BENCHES

A perfect addition to your car wash. This environmentally friendly energy source with USB charging function can be used without restrictions. The benches are modular and configurable. They are made from the highest quality materials and are extremely durable, resistant to weather and mechanical damage.

The solar benches can be equipped with a wi-fi router, LED lighting, bicycle rack and intuitive chargers.



EUROWASH **FOAM-LI** MACHINE
FOR WASHING UPHOLSTERY

- 2 programmes: foam spray; foam suction
- Stainless steel housing
- Application of foam with a brush nozzle
- 4.5 m suction hose
- Electronic coin slot
- Voltage 400V
- Power 2,2 kW
- Height 1610 mm
- Width 720 mm
- Depth 500 mm
- Weight 113 kg



4ES CAR FRESHENER
DISTRIBUTOR

- Stainless steel housing
- Electronic coin slot
- Anti-freeze system
- 4 fragrance programmes
- Application nozzle with a spring-loaded gun
- Voltage 230V
- Power 200 W
- Height 1480 mm
- Width 390 mm
- Depth 380 mm
- Weight 25 kg



LT 400 CAR RUGS WASHING
MACHINE

- Stainless steel housing
- Electronic coin slot
- Voltage 400V, 3-phase
- Power 1,0 kW
- Height 900 mm
- Width 800 mm
- Depth 550 mm
- Weight 72 kg



LT 400-B CAR RUGS WASHING
MACHINE

- Stainless steel housing
- Bactericidal kit
- Electronic coin slot
- Voltage 400V, 3-phase
- Power 1,0 kW
- Height 900 mm
- Width 800 mm
- Depth 550 mm
- Weight 72 kg



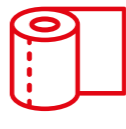
DPC CLOTH DISPENSER

- Front opening
- Stainless steel housing (free-standing)
- Electronic coin slot
- Voltage 230V
- Power 200 W
- Height 1560 mm
- Width 520 mm
- Depth 400 mm
- Weight 45 kg



PANNOMATIC N CLEANING
CLOTHS DISPENSER

- Dispenser of soaked cleaning cloths for:
 - cleaning windows
 - cleaning dashboards
 - cleaning external strips
 - dry cloths
- Anti-freeze system
- Stainless steel housing
- Electronic coin slot
- Voltage 230V
- Power 200 W
- Height 1560 mm
- Width 520 mm
- Depth 400 mm
- Weight 53 kg



DC PAPER DISPENSER

- Front opening
- Stainless steel housing (free-standing)
- Electronic coin slot
- Voltage 230V
- Power 200 W
- Height 1560 mm
- Width 520 mm
- Depth 400 mm
- Weight 45 kg



EUROWASH SINGLE-
STATION COMPRESSOR
WITH APPROVAL

- Pressure gauge on the housing and buttons “+”, “-” for tire inflation
- Equipped with a hose with a fitting for inflation
- Stainless steel housing
- Automatic retractable hose
- Anti-freeze system
- Voltage 230V
- Power 0,5 kW
- Height 1320 mm
- Width 520 mm
- Depth 400 mm
- Weight 42 kg



ASM SELF-SERVICE DRYER

- Front opening
- Stainless steel housing
- Electronic coin slot
- Swivel arm
- Base of the swivel arm
- Elbow connecting the base to the arm
- Stabilizer
- Hose with a drying head
- Voltage 400V
- Power 2,2 kW
- Height 1320 mm
- Width 640 mm
- Depth 400 mm
- Weight 66 kg

EQUIPMENT

CARWASH CHEMICALS

The offered products can be safely placed in dispensers without the risk of damage. The formulas are commonly used in car washes throughout Europe. What are the properties of the car wash chemicals offered by Eurowash?

The car wash chemicals on our offer are safe for the paintwork, plastic and metal parts of the car. They have carefully designed formulas. The products should not be applied to heated surfaces. Their main features are pleasant fragrance, environmental friendliness and an attractive price. For the most part, they are concentrates, so even a small amount is sufficient to wash the entire car, whether it is a passenger car, a van or a truck. Take a look at our range of car wash chemicals!

We offer chemicals for car washes, including.



PRE-SOAKING



Ultra Rim Cleaner

Formulas for washing aluminium structures, rims, tyres and external plastic parts in motor vehicles.



Ultra Rim Winter

Formulas for washing aluminium structures, rims, tyres and external plastic parts in motor vehicles. Seasonal products.

ACTIVE FOAM



Foam Ultra Plus Watermelon

Active, high-foam agent with watermelon fragrance. Allows to wet dirt with a large amount of thick foam that adheres to the washed surface. An effective and safe concentrate for washing passenger cars and trucks. Contains corrosion inhibitors.

MAIN WASH



Foam Ultra Almond

Alkaline high-foam washing agent. Quickly remove even the toughest road dirt, insects, tree resins, oil and grease. Pleasant intense almond fragrance.



Eco Pulver Plus

Phosphate-free touchless car wash powder that meets strict environmental standards. Highly efficient and effective powder with an excellent weight-to-volume ratio and saturation with cleaning agents. Ensures optimum balance between price and cleaning quality. Environmentally friendly and safe for the environment, equipment and humans.



White Pulver Plus

Highly efficient and effective washing agent. Pleasant aloe vera fragrance. Carefully selected phosphate content that meets environmental standards.



Pink Pulver Plus

High-foam agent that effectively softens dirt, facilitating the removal of even the heaviest soiling. Pleasant raspberry fragrance enhances cleaning experience.

Contains no fillers. Leaves no streaks. Safe for paintwork and rubber parts.

Ideal weight-to-volume ratio makes it extremely economical.

Leaves a clean shiny surface ready for wax application.

WAX



Wax GlossTec Flavour

Advanced technology which guarantees an excellent visual effect. Nanoscopic architecture on the surface minimises droplet adhesion, creating the so-called lotus effect. Polishes the body without leaving streaks and provides long-lasting protection. Safe for all types of paintwork. Pleasant honey fragrance.

SALT



Tablet salt

Essential for water softener regeneration. The shape of the tablet prevents clumping together in the tanks. Reduces water and detergent consumption. Protects against limescale deposits.

FOAM NEUTRALISER

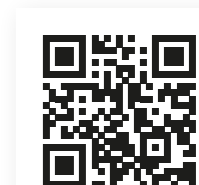


Anti Foam

Concentrate for neutralising foam in aqueous environments.

CARWASH CHEMICALS

QR code to
THE SHOP
EUROWASH



ALL OUR PRODUCTS CAN COME
WITH A SPECIFIC **PAYMENT SYSTEM.**



Cash
payments



Contactless
payments
(**pay Pass**)



Spending bonus tokens
for vacuuming



Bubblepay
app



Eurokey
reader

PAYMENT METHODS



OWN FUNDS

Not every investor will or wants to finance the project using their own resources. Due to the fact that the investment in question is a business that will generate revenues, it is possible and relatively simple to obtain external financing.

LEASING

Leasing is the most frequently chosen form of external financing for car wash investment projects. The process of applying for financing under this option is similar to applying for a bank loan.

INVESTMENT LOAN

An investment loan is one of the options for financing a car wash project. Both the financing terms and the conditions for obtaining financing under this option depend mainly on the investor's financial capabilities and the business plan presented to the bank.

EU GRANTS

Some investors try to obtain EU grants to finance investments in car wash projects. This method of financing depends to a large extent on the regions where the investment is to be located and the currently available EU programmes.

FINANCING



We approach each project with full professionalism. Bubble Wash comes in a customised colour scheme. Glass banners with the customer's logo were used. The bays are adapted for the installation of PV systems. The facility is retrofitted with cleaning equipment making it even more popular among customers.

Thanks to our well-organised service, we are able to provide our customers with assistance in any emergency. We implement our projects also outside of Poland. Our European partners have put their trust in us and our technology - Eurowash car washes are now available to all customers in Europe.

OUR PROJECTS

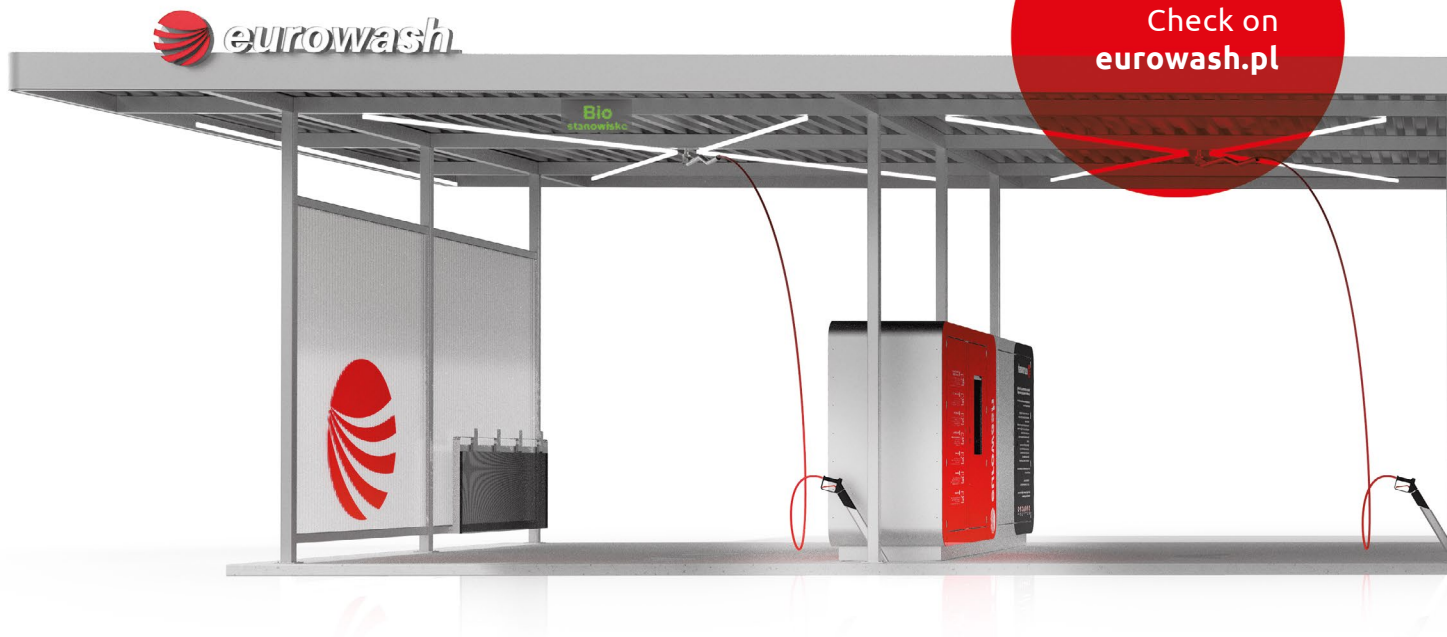


The overall image and visual design is very important to us. We ensure optimal lighting and graphic design for each of our car washes. We want to change the stereotypical image of touchless car washes. We want to offer our partners solutions that blend in with the overall look of their facility.

OUR PROJECTS



SILVER DESIGN



Eurowash Sp. z o.o.

street Szosa Baranowicka 162
15-509 Sobolewo

+48 85 874 30 30

TAX ID number 5423244835
KRS 0000554941
REGON 361345386

office@eurowash.pl

www.eurowash.pl

CAR WASH SALES

+48 696 416 700
sales@eurowash.pl

SALES DEPARTMENT, SPARE PARTS, CLEANING CHEMICALS

+48 535 002 713
+48 503 784 609
handel@eurowash.pl

FOREIGN MARKETS

Slovakia

KAMIOR S.R.O.
+421 907 991 105
info@eurowash.sk

Hungary

WASH SYSTEM KFT.
+36 30 200 54 38
washsystem@washsystem.hu

Western markets

Łukasz Kotakowski
+48 696 416 700
sales@eurowash.pl

Eastern markets

Sylwester Załuska
+48 696 412 917
sylwester.zaluska@eurowash.pl



European
Funds
Eastern Poland



Republic
of Poland

European Union
European Regional
Development Fund

